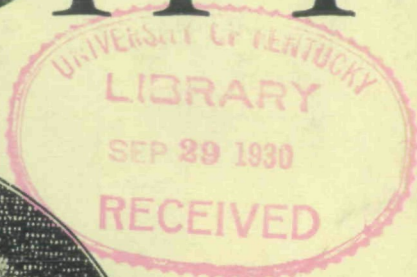


The Journal of HEREDITY



R. J. Camerarius

—His fifty-page "Letter" (1694) reported the first authentic experiments establishing the existence of sex in plants.

VOLUME 21

JUNE, 1930

NUMBER 6

The American Genetic Association

An incorporated organization devoted to promoting a knowledge of the laws of heredity and their application to the improvement of plants, animals, and human racial stocks

DAVID FAIRCHILD, President Vice-President, W. E. CASTLE Secretary, C. E. LEIGHTY
Treasurer, MRS. G. W. SINCELL

JOHN B. LARNER, Financial Advisor Legal Advisors, PEELE, OGILBY and LESH

EDITORIAL BOARD

M. DEMEREC R. R. GRAVES L. C. DUNN
H. J. MULLER GEORGE M. DARROW PAUL POPENOE

Members of the Council are ex-officio members of the Editorial Board

Managing Editor: ROBERT C. COOK

COUNCIL

W. E. CASTLE, Professor of Zoology, Harvard University, and Research Associate of the Carnegie Institution of Washington.
LEON J. COLE, Professor of Genetics, University of Wisconsin.
G. N. COLLINS, Botanist, U. S. Department of Agriculture, Washington, D. C.
O. F. COOK, Biologist in Charge of Breeding Investigations, U. S. Department of Agriculture.
DAVID FAIRCHILD, Agricultural Explorer, U. S. Department of Agriculture.
HARRY V. HARLAN, Senior Agronomist in Charge of Barley Investigations, U. S. Department of Agriculture.
C. E. LEIGHTY, Agronomist in Charge of Eastern Wheat Investigations, U. S. Department of Agriculture.
VERNON KELLOGG, Chairman, Division of Educational Relations, National Research Council, Washington, D. C.
J. H. KEMPTON, Bureau of Plant Industry, U. S. Department of Agriculture.
E. W. SHEETS, Chief of Animal Husbandry Division, U. S. Department of Agriculture.
FREDERICK ADAMS WOODS, Lecturer on Biology, Massachusetts Institute of Technology.
SEWALL WRIGHT, Professor of Zoology, University of Chicago.

ADVISORY COMMITTEE

W. S. ANDERSON, Genetics Department, University of Kentucky, Lexington, Kentucky.
E. B. BABCOCK, Genetics Department, University of California, Berkeley, California.
E. A. BESSEY, Professor of Botany, Michigan State College, East Lansing, Michigan.
A. F. BLAKESLEE, Plant Geneticist, Carnegie Institution, Cold Spring Harbor, New York.
J. K. BREITENBECHER, McGill University, Montreal, Canada.
W. E. BRYAN, Professor of Plant Breeding, University of Arizona, Tucson, Arizona.
C. B. DAVENPORT, Director, Department of Genetics, Carnegie Institution of Washington, Cold Spring Harbor, L. I., New York.
J. A. DETLEFSEN, Professor of Genetics, Wistar Institute, Philadelphia, Pennsylvania.
RUSSELL W. DUCK, Professor of Animal Husbandry, Syracuse University, Syracuse, New York.
E. M. EAST, Professor of Plant Genetics, Bussey Inst. of Applied Biology, Boston, Mass.
R. A. EMERSON, Professor of Plant Breeding, Cornell University, Ithaca, New York.
C. P. GILLETTE, President, The Genetic Foundation, Fort Collins, Colorado.
C. M. GOETHE, Sacramento, California.
HARRISON R. HUNT, Professor of Zoology, Michigan State College, East Lansing.
H. S. JENNINGS, Professor of Zoology, Johns Hopkins University, Baltimore, Maryland.
D. F. JONES, Plant Breeder, Connecticut Agricultural Experiment Station, New Haven, Conn.
M. A. JULL, Senior Poultry Husbandman, U. S. Department of Agriculture, Washington, D. C.
F. B. LINFIELD, Director, Montana Experiment Station, Bozeman, Montana.
WM. A. LIPPINCOTT, Professor of Poultry Husbandry, University of California, Berkeley, Cal.
C. C. LITTLE, Director, Roscoe B. Jackson Memorial Laboratory, Bar Harbor, Maine.
JAY L. LUSH, Professor in Animal Husbandry, Iowa State College, Ames, Iowa.
H. H. NEWMAN, Professor of Zoology, University of Chicago, Chicago, Ill.
T. S. PALMER, Expert in Game Conservation, U. S. Dept. of Agriculture, Washington, D. C.
JOHN H. PARKER, Professor of Agronomy, Kansas State College, Manhattan, Kansas.
MRS. CHARLES C. RUMSEY, Wheatly Hills, Westbury, Long Island.
JOHN M. SCOTT, Vice Director, Florida Agricultural Experiment Station, Gainesville, Florida.
JOHN W. SCOTT, Professor of Zoology, University of Wyoming, Laramie, Wyoming.
A. D. SHAMEL, Pomologist, U. S. Department of Agriculture, Riverside, California.
GEORGE H. SHULL, Professor of Biology, Princeton University, Princeton, New Jersey.
W. W. SMITH, Professor of Animal Husbandry, Purdue University, Lafayette, Indiana.
CHARLES R. STOCKARD, Professor of Anatomy, Cornell University, New York City.
A. B. STOUT, Director of Laboratories, New York Botanical Gardens, New York City.
W. T. SWINGLE, Plant Physiologist in Charge of Breeding Investigations, U. S. Department of Agriculture, Washington, D. C.
LOU D. SWEET, Seedsman, Denver, Colorado.
W. H. TOMHAVE, American Aberdeen-Angus Breeders' Association, Chicago, Ill.
H. E. WALTER, Professor of Biology, Brown University, Providence, Rhode Island.
H. J. WEBBER, Director, Citrus Experiment Station, Riverside, California.
E. N. WENTWORTH, Armour's Bureau of Agr'l Research and Economics, Chicago, Illinois.
P. W. WHITING, Department of Biology, University of Pittsburgh, Pittsburgh, Pa.


The Journal of Heredity

Vol. XXI

JUNE, 1930

No. 6

IN THIS ISSUE

| | |
|---|-----|
| "NERVOUS" GOATS <i>By Jay L. Lush</i> | 243 |
| HEREDITY, ENVIRONMENT AND HUMAN FATE <i>A Review by James H. Kempton</i> | 248 |
| BREEDING "CROSSED EGGPLANTS" IN JAPAN <i>By Yoiti Kakazaki</i> | 253 |
| X-RAY EXPERIMENTS WITH DROSOPHILA <i>By A. S. Serebrovsky and N. P. Dubinin</i> | 259 |
| HERITABLE CHARACTERS OF MAIZE—XXXV <i>By W. R. Singleton and D. F. Jones</i> | 266 |
| HEREDITY AND ENVIRONMENT IN CHILD DEVELOPMENT <i>By Harold Ellis Jones</i> | 269 |
| THE DYING PROFESSOR <i>By Raymond R. Willoughby</i> | 273 |
| FLOWER BUDS IN COTTON BOLLS <i>By J. W. Hubbard</i> | 275 |
| ON THE INHERITANCE OF AN ANOMALY OF HUMAN DENTITION <i>By C. Leonard Huskins</i> | 279 |
| GENETIC STUDIES IN BARLEY <i>D. W. Robertson and G. W. Deming</i> | 283 |
|  | |
| BOOKS RECEIVED..... | 247 |
| SEX-REVERSAL IN MAN..... | 252 |
| MIGRATION STATISTICS—A Review..... | 271 |
| EUGENICS EXPLAINED—A Review..... | 272 |
| EFFECTS OF SEXUAL STERILIZATION—A Review.... | 277 |
| THE DISCOVERER OF SEX IN PLANTS..... | 277 |
| A GIANT, DISEASE-RESISTANT SUGARCANE..... | 278 |
| EARLY CHINESE RECORD OF MUTATION IN RICE.... | 282 |

COMING

Human Heredity

Twinning among Relatives—
How Immigrants "Eat Out" the
Native-Born—Decay of Ancient
Civilizations—Hereditary Tumors.

⌘

Genetics of Cotton

A summary of knowledge of
heredity of this important crop
plant.

⌘

The Siamese Cat

A study of effect of environ-
ment in modifying coat-color.

⌘

The "Frizzle" Fowl

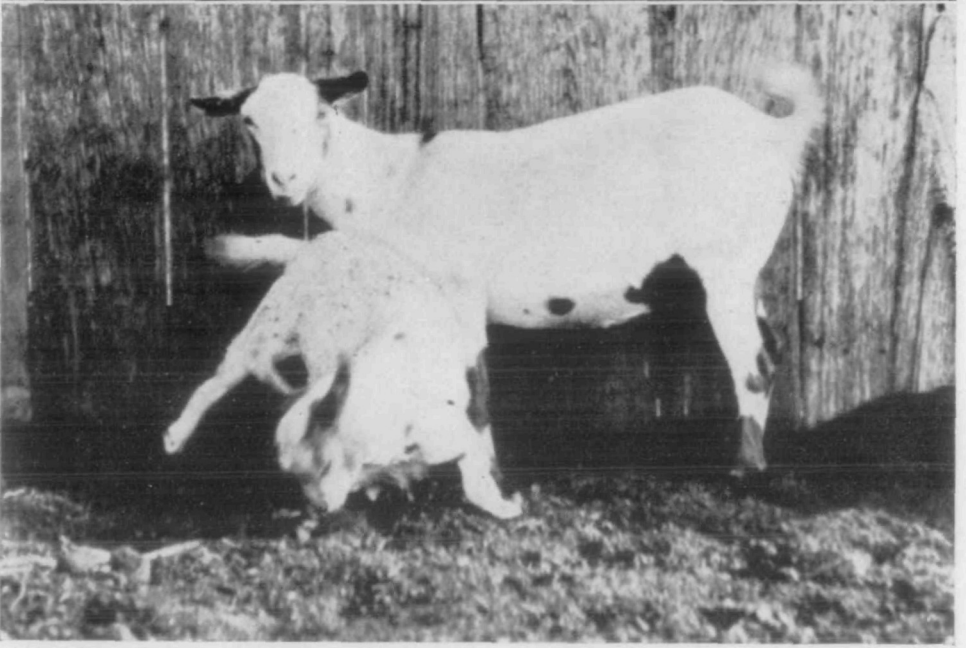
Expression and inheritance of
an ancient and widespread feather
abnormality in fowls.

The JOURNAL OF HEREDITY is published monthly by the AMERICAN GENETIC ASSOCIATION, at 1918-32 Harford Avenue, Baltimore, Md., and Victor Building, Washington, D. C. Address all communications regarding editorial matters and the business management of the Association to Room 306, Victor Building, Washington, D. C. Entered as second-class matter February 24, 1923, at the postoffice at Baltimore, Maryland. Acceptance for mailing at the special rate of postage provided for in Section 1103, Act of October 3, 1917, authorized December 20, 1918. Contents copyrighted 1930 by the American Genetic Association. Reproduction of articles or parts of articles only upon request, for a proper purpose, and provided due credit is given to the author and to the JOURNAL OF HEREDITY, Washington, D. C. The title "Journal of Heredity" is registered as a trade-mark in the U. S. Patent Office.

\$3.50 a Year

Prices of back numbers on application

35c. the Copy



"NERVOUS" GOATS "IN ACTION"

Frontispiece

This strain of "nervous" goats has the peculiarity of losing consciousness when suddenly frightened. These two photographs show individuals in a Texas herd, in the act of falling to the ground as a result of such a stimulus. In the lower picture the kid is affected while its mother is not, as all members of the herd are rarely affected simultaneously.